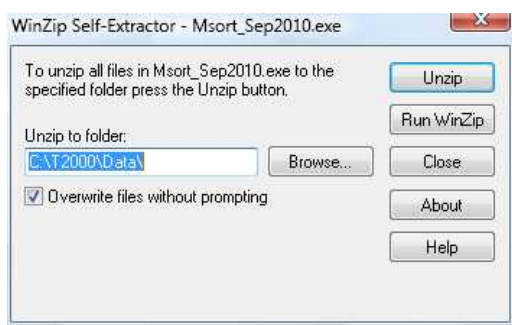


T2 - Mailsort® Database 2010

If you are registered to use Mailsort® then it is essential that mailings are prepared using the most current official release of the Mailsort® data.

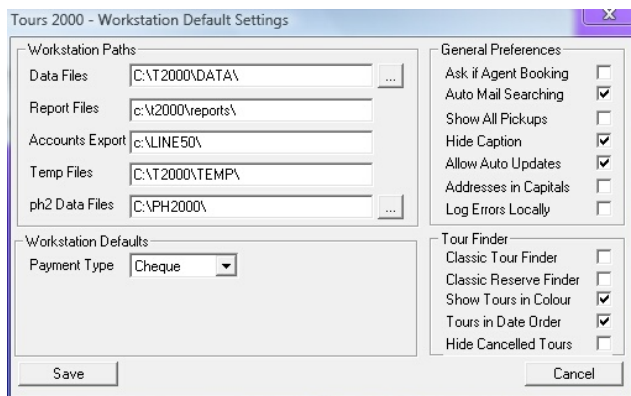
The Mailsort® Database 2010 came into effect on 27 September 2010 and must be used for Mailsort® from this date in order for you to continue receiving the benefits and the associated postage discounts.

To update your T2 system with Mailsort® Database 2010, download the T2_Mailsort_2010.exe file to the \T2000\Updates\ folder on the server where your T2 data files are located, and run it from there. The T2 data files will normally be installed in the C:\T2000\Data\ folder – if this is the case, simply click the Unzip button and the six new data files will be installed into your data set. If you have multiple data sets, or your data is located in a different place, use the Browse button to select the correct location.



Once the files have been installed successfully, click Close – that's all there is to it!

If you are uncertain where your T2 data is located then run T2, click on Maintain and then select Defaults from the Maintain toolbar. The data file path is visible as shown below:



Once the Mailsort® Database 2010 has been installed, go to MailList in T2 and select Mailsort – you should see the caption **Mailsort Database Version 27-SEP-2010.**

If you prefer to install the update from a workstation, then download T2_Mailsort_2010.exe to a folder of your choice and run it from there. You will still need to enter the correct file path for the T2 data set on your server.

For further information on Mailsort®, or to download the latest technical documentation, visit www.mailsorttechnical.com

Mailsort® is the registered trademark and copyright of © Royal Mail Group Ltd 2010